



Office 365 Exchange Online Individual Mailboxes Backup Solution v7

The Most Wanted Backup Solution for Office 365 Exchange Data

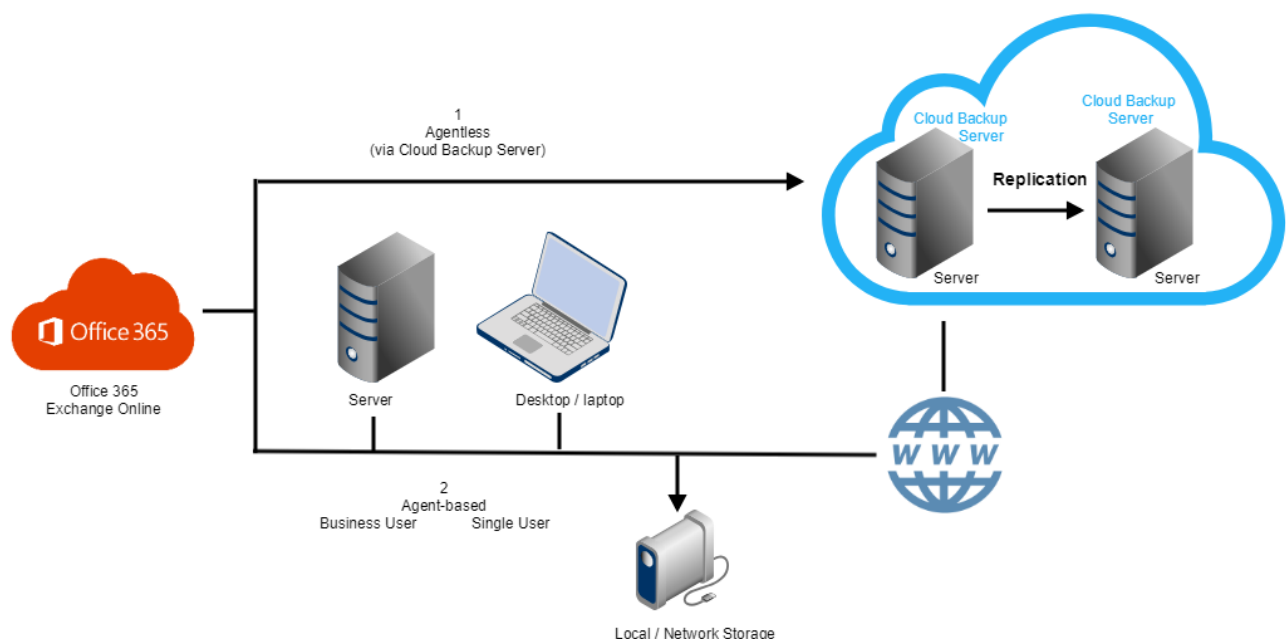
As Office 365 adoption is surging, millions of organisations have migrated their on-premises Exchange email infrastructure to Office 365 Exchange Online. While customers' data is protected from disasters that happen at Microsoft's data centres, it is not safe from human errors or malicious activities. Deleted emails could be forever gone after the retention period. No companies should risk their critical mailbox data being in the hands of one provider.

Our Office 365 Exchange Online Individual Mailboxes backup solution now gives clients absolute peace of mind by backing up the Exchange Online data to a local storage or another cloud, and allowing quick recovery with just a few clicks.

Easy deployment

Deployment for Office 365 Exchange Online Individual Mailboxes backup solution is easy and flexible. Simply create an Business User / Single User* client user on the latest version of Our Cloud Backup Server console with Office 365 Exchange Online module enabled. Then, either create an Office 365 Exchange Online backup set through Web console user login or in Business User / Single User client backup agent. After a few steps of configuration, such as selecting the Office 365 mailbox items for backup and setting up the backup schedule, destination and encryption, the selected data will be automatically backed up to the desired destination(s) according to the defined schedule(s).

* Up to 2 user mailboxes can be backed up per Single User installation



About Us...

Total UK operation from the storing of your encrypted data in UK data centres to UK technical support

UK-based cloud backup and disaster recovery company established in 2004.

We provide:

- ✓ Our own private cloud, which is hosted in two UK, ISO 27001 accredited data centres
- ✓ UK support via phone, email or online chat
- ✓ Over a decade of cloud service experience
- ✓ Certified engineers
- ✓ Friendly and efficient support
- ✓ 99.9% uptime
- ✓ Free seeding service for initial backup and large restores
- ✓ Protect it! Solutions for servers, workstations and Office 365 mailbox data
- ✓ GDPR compliant

Easy backup and recovery of full mailbox or brick-level items

Administrators of Office 365 are able to back up all or selected mailboxes under their accounts with just a few clicks. Not only the full mailbox, one can also select brick-level items such as emails, contacts, calendars and tasks for backup and restore.

Agentless or agent-based deployment options

Administrators are empowered to deploy the Office 365 mailbox data backup solution flexibly in agentless or agent-based approach for meeting different needs. Simply use the web console for hassle-free backup and restore management on the go, or adopt the Business User / Single User client agent for robustness and backup performance.

Automatic backup with flexible scheduling

Office 365 Exchange mailbox backup can be scheduled at one's will so that it is performed most conveniently. Backup jobs can be run automatically at a specific time or on a recurring basis. Administrators can also create multiple custom backup plans to accommodate different levels of protection for different Office 365 user groups.

High-speed and efficient backup

The multi-threading implementation in our solution utilises the computing power of multiple CPU cores for creating multiple backup and restore threads to turbocharge the Office 365 mailbox data backup and restore performance.

Multiple backup destinations

You can back up encrypted Office 365 mailbox data to local drives, network share and our UK private, replicated cloud storage sequentially or concurrently, to minimise the risk of data loss.



Office 365 Business Essentials

Office 365 Business Premium

Office 365 Education

Office 365 Enterprise E1

Office 365 Enterprise E3

Office 365 Enterprise E4

Office 365 Enterprise E5

Infinite retention period of mailbox data

Users are able to keep their important Office 365 mailbox data as long as they want utilising custom retention policies. They can also set daily, weekly, monthly and/or yearly retention policies to flexibly suit their IT audit and compliance needs.

Flexible point-in-time recovery

Users can restore their Office 365 mailbox data from any point in time that it was backed up. Even multiple versions of an item can be recovered through a single operation if needed. There are no more fears for data loss due to accidental or malicious deletion.

Unhackable 256-bit truly randomised encryption key

Before backing data up to our private UK cloud, data security can be ensured by enabling 256-bit encryption so that the backup agent will encrypt the backup data locally before sending securely to our UK Cloud. The 256-bit encryption key is impossible to hack even by brute force attack using a supercomputer.

Centralised administration and configuration in web control

Our centralised web console offers administrators and backup users a one-stop location for monitoring and managing backup and restore activities. Administrators are allowed to create multiple backup user accounts and mass deploy backup rules at the same time. This saves provisioning costs and time in organisations with large enterprise