



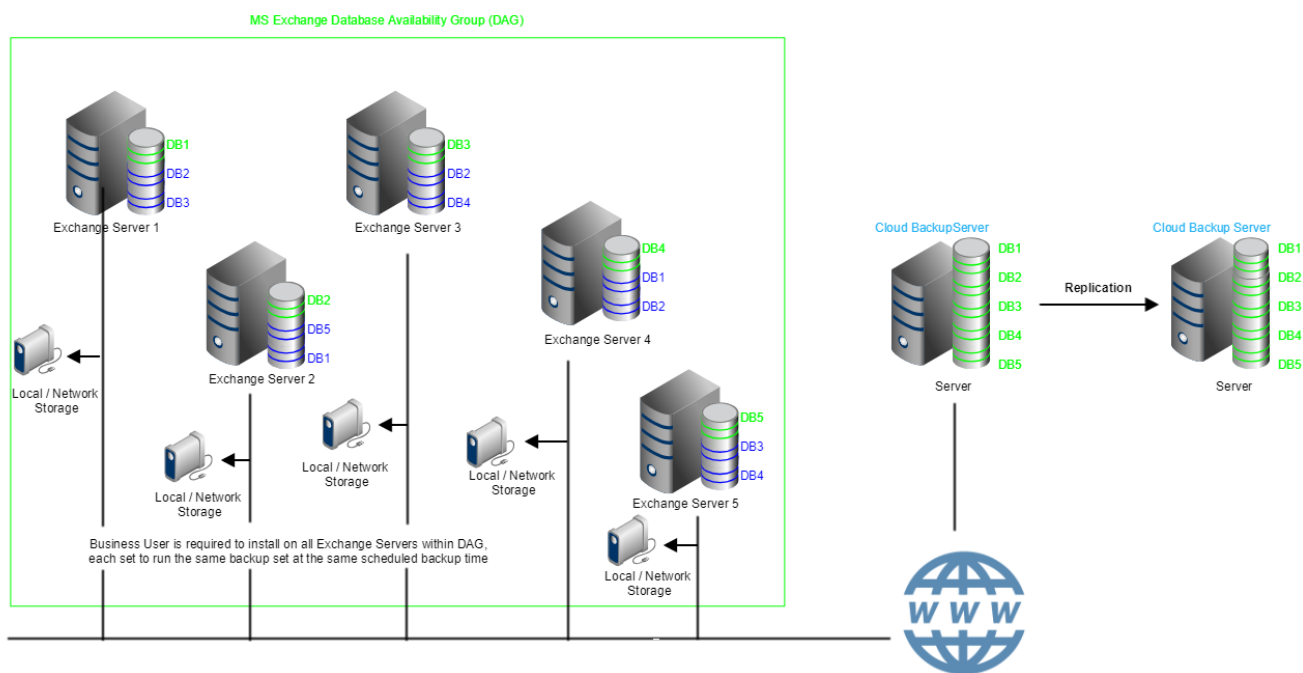
Microsoft Exchange Server Backup Solution v7

Backup of Microsoft Exchange Server Never Gets Easier

We have the tools and technology to ensure the availability of all Microsoft Exchange data. We bring you Microsoft Exchange backup solutions that can successfully take on the complex task of backing up exchange data. Whether you want to backup Exchange database or individual Exchange emails, you can count on the our backup utilities to deliver all the services you need.

Easy deployment

Deploying the Microsoft Exchange Server backup solution is a simple task. Install Business User backup agent on the Exchange Server you need to protect, including all the servers within the DAG (Database Availability Group) locating in different geographical locations, and enable the Microsoft Exchange Server module and/or the Microsoft Exchange Mailbox module as necessary. After proper configuration of the backup source (the whole information store or mailbox items), backup schedule, destination and encryption, the selected Microsoft Exchange Server data can be backed up to local storage, network share and our UK cloud backup server



About Us...

Total UK operation from the storing of your encrypted data in UK data centres to UK technical support

A UK-based cloud backup and disaster recovery company established in 2004.

We provide:

- ✓ Our own private cloud, which is hosted in two UK, ISO 27001 accredited data centres
- ✓ UK support via phone, email or online chat
- ✓ Over a decade of cloud service experience
- ✓ Certified engineers
- ✓ Friendly and efficient support
- ✓ 99.9% uptime
- ✓ Free seeding service for initial backup and large restores
- ✓ Protect it! Solutions for servers, workstations and Office 365 mailbox data
- ✓ GDPR compliant

Brick-level backup of selected emails of individual mailboxes

Our Microsoft Exchange Server Mail-level backup solution allows you to perform brick-level backup instead of backing up the whole database of Microsoft Exchange Server. With just a few clicks, you can quickly back up your individual emails, contacts and calendars in the selected mailboxes.

Quick restore of individual emails without restoring whole Exchange database

If you lost or accidentally deleted some important emails, you can easily and quickly restore those emails to their original location with our Microsoft Exchange Server Mail-level backup solution without the need to restore the whole Exchange database.

Support geographically distributed configuration

Backup of Microsoft Exchange DAG is just a simple task by using our solution in conjunction with the Business User client-side backup application. Our Microsoft Exchange Server DAG solution supports backup and restore of Microsoft Exchange DAG at both database and mailbox levels, even if the nodes in the DAG are geographically distributed. All you need to do is install Business User on all Exchange servers within the DAG and set each server to run the same backup set at the same scheduled backup time.

Database hot backup

With our hot backup feature in the Microsoft Exchange Server Database backup solution, you can back up Microsoft Exchange Server while continuing to access the data 24x7 without service interruption. This lets users carry on working while the backup is performed.

We also support:

- ✓ Office 365 / Cloud 2 Cloud
- ✓ SQL Server
- ✓ Hyper V
- ✓ VMWare
- ✓ Windows System
- ✓ Synology

For more details please visit
our website:

In-File Delta incremental backup

With our In-File Delta incremental backup technology, only changed blocks are backed up each time. During restoration, these blocks will be combined with previous backups to synthesize a new full backup for quick recovery.

Multi-threading

The multi-threading implementation in our solution will utilise the computing power of multiple CPU cores for creating multiple backup and restore threads to give you super-fast Exchange Server backup and restore performance.

LAN-free backup

Our solution allows you to use fibre-channel and iSCSI SANs to reduce your network loading and increase the backup data transfer rate significantly.

Multi-destination backup to local and cloud destinations

You can back up the Exchange Server data to multiple destinations, including local drives, network share and our UK private, replicated cloud storage sequentially or concurrently to minimise the risk of data loss.

Flexible retention policy

Our solution allows you to set flexible retention policies, including daily, weekly, monthly and yearly policies to suit your IT audit and compliance requirements for keeping historical data.



Exchange Server 2016

* *Database Availability Group (DAG) for Exchange 2010 and 2013 are supported by Business User version 7.5.0.0 or above*

Unhackable 256-bit truly randomised encryption key

Before backing data up to our private UK cloud, data security can be ensured by enabling 256-bit encryption so that the backup agent will encrypt the backup data locally before sending securely to our UK Cloud. The 256-bit encryption key is impossible to hack even by brute force attack using a supercomputer.

Encryption key recovery

System administrator, if enabled, can force users to upload their hashed encryption key to the centralised management console so that when a user has lost his/her encryption key, the system administrator can engage our encryption key recovery service to get the key back for that user.

Manage all backup users through a centralised web console

In case you have many Microsoft Exchange Servers managed by many system administrators, our solution allows you to create multiple backup user accounts for these administrators in a centralised management software, and centrally monitor and manage their activities through a web console. Clear audit trail is available for tracking purpose.